



Panini Universal Driver Package Installation Instructions

July 2014



Installing the Panini Universal Scanner Driver

The following steps should be followed for installation of a Panini scanner. The user installing the scanner on his/her PC should have local administrative rights to the computer on which the scanner is being installed.

Step 1:

Do not connect the scanner

Step 2:

Open an internet browser and login to CCX. After logging into CCX, follow the instructions below.

1. Click on **Documentation**.
2. Under **Scanner Drivers and Documentation**, click **Panini**.
3. Under **Panini Universal Driver Installation Package for Windows**, click **Driver Installation Package**.

Panini Scanners Installation Information

General Documentation

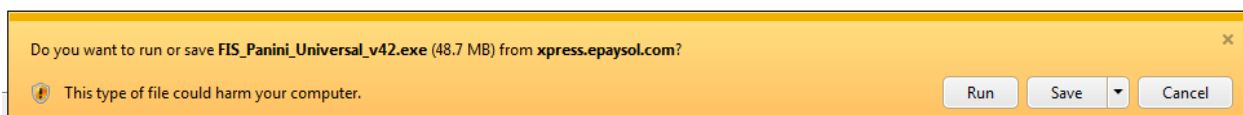
- [Panini Website](#)

Current Driver Installation Package

- **Panini Universal Driver Package for Windows**
 - [Installation Instructions \(PDF Format\)](#)
 - [Driver Installation package](#)
- **Panini for Mac Driver Package**
 - [Installation Instructions \(PDF Format\)](#)
 - [Driver Installation package \(ZIP file\)](#)

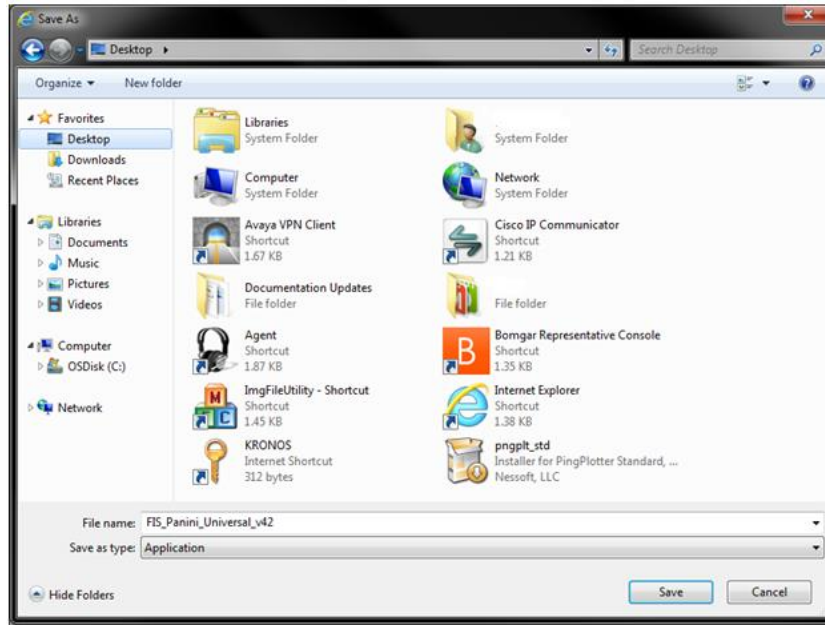
Step 3:

The user will be prompted with the following screen. Click **Save**.



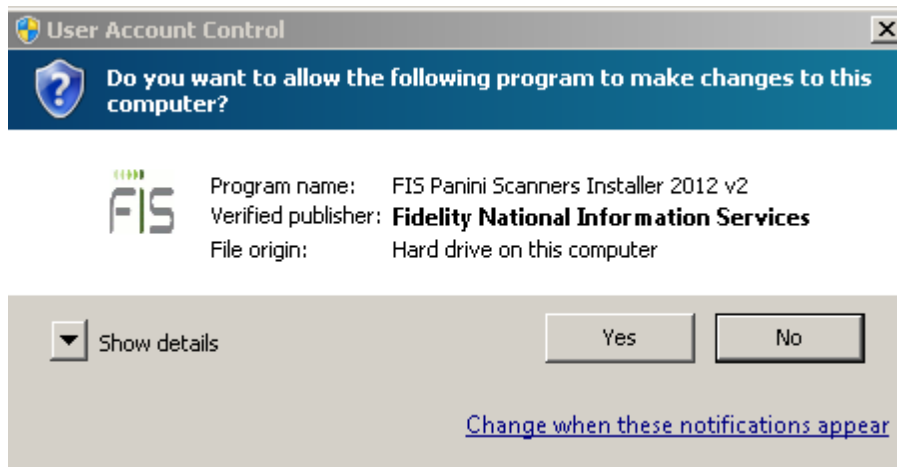
Step 4:

The system will prompt the user to save the information on the PC. Choose a location and click **Save**.



Step 5:

The software will be saved to the PC. If the PC is running Windows XP, right mouse click on **Open** to start the installation. If the PC is using Windows Vista/Windows 7/Windows 8, right mouse click on the program and choose **Run as Administrator**. Choose **Yes** on the User Account Control prompt.



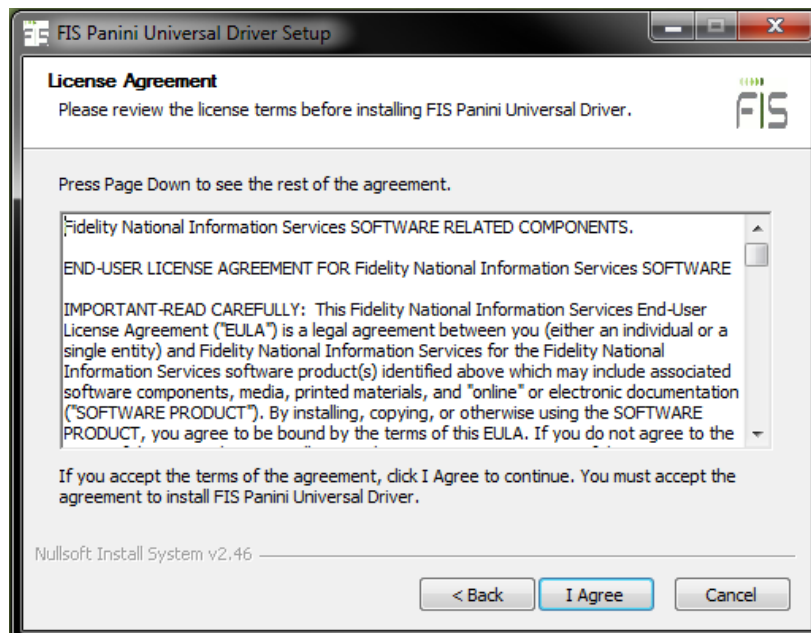
Step 6:

The following screen will display. Click **Next**.



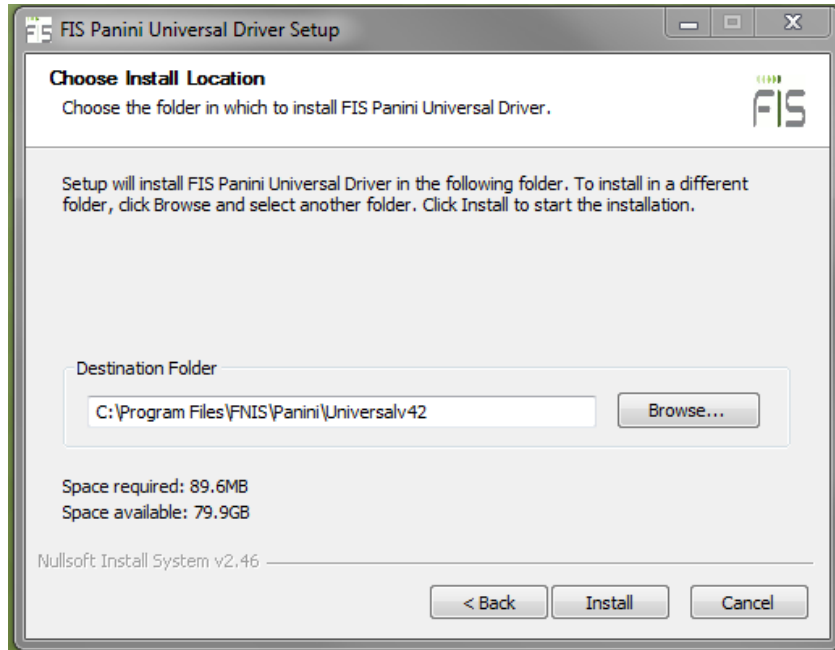
Step 7:

The next screen to display is below. Click **I Agree**.



Step 8:

The following screen will present. Click **Install**.

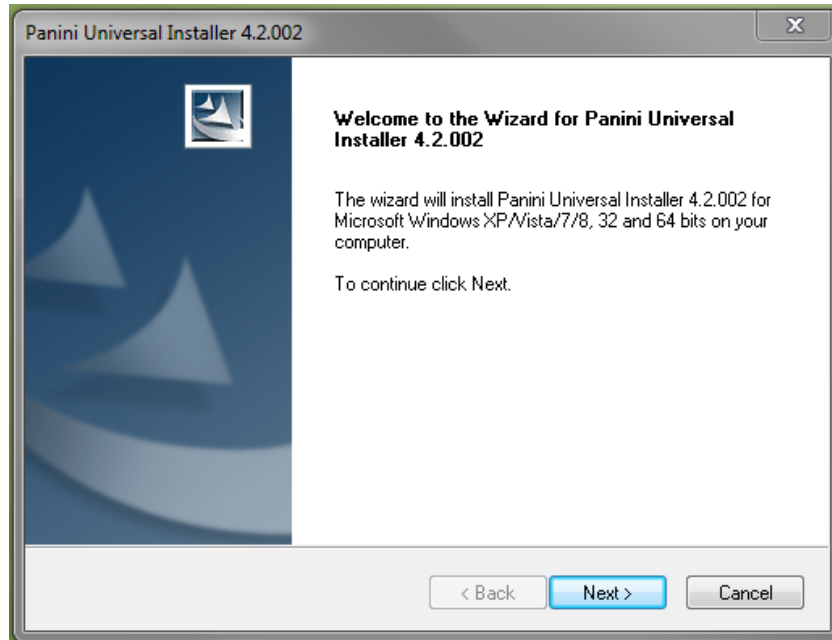


The following screen will display briefly.



Step 9:

The following screen will display. Click **Next**.



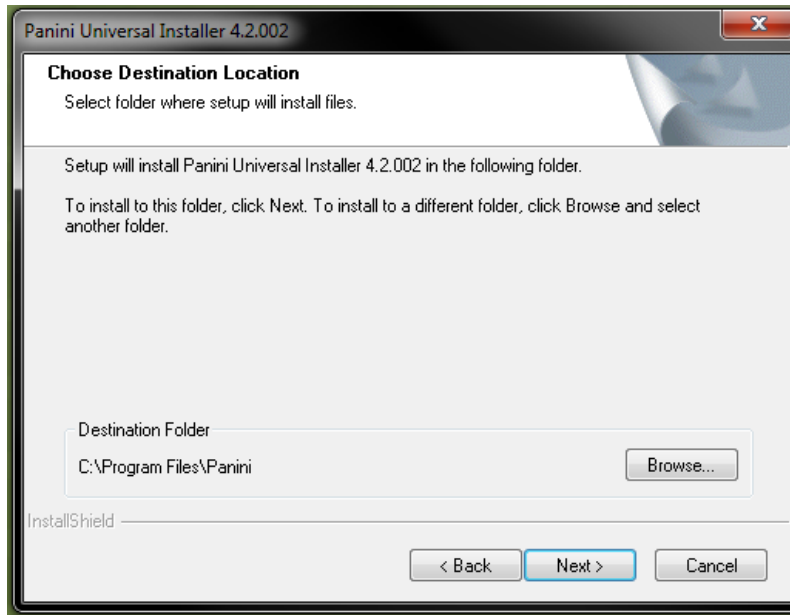
Step 10:

The user will then be prompted with the following screen. Click to accept, then click **Next**.



Step 11:

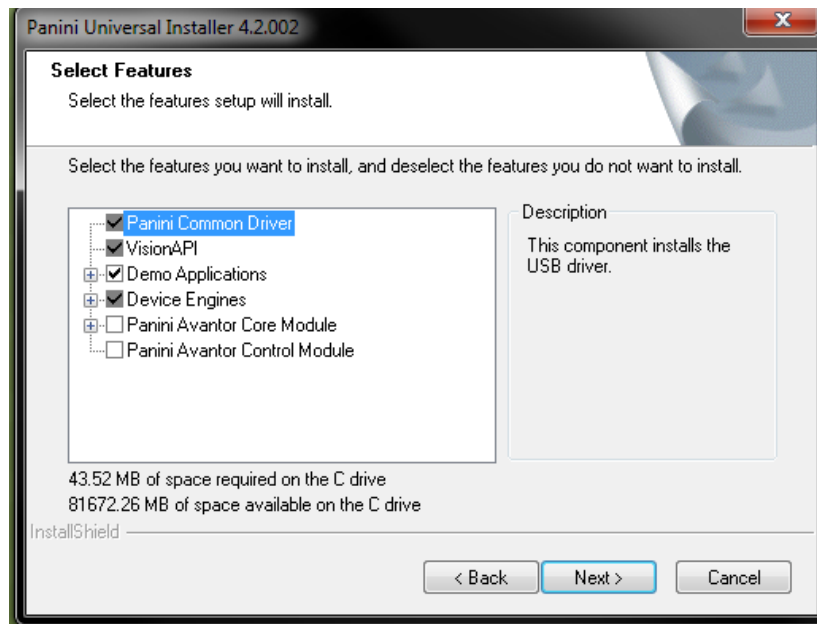
The following screen will display. Click **Next**.



Step 12:

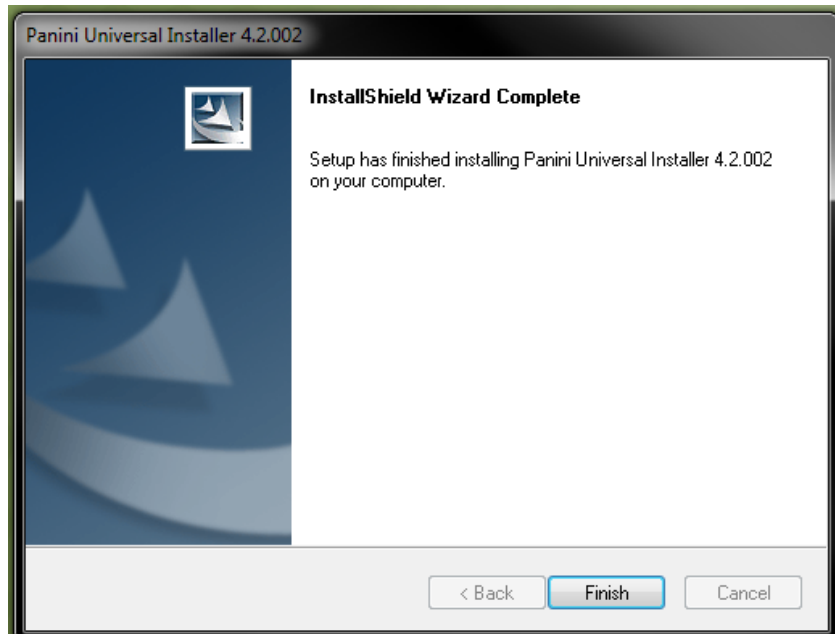
The following screen will display. Leave all default checkmarks in place. Click **Next**.

The next part of the install may take a few minutes to run; the DOS box may appear and disappear.



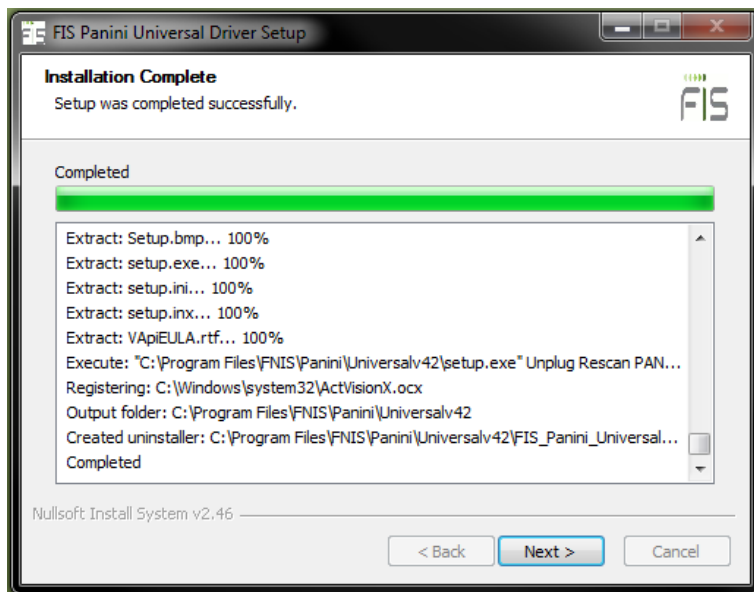
Step 13:

The following screen will display. Click **Finish**.



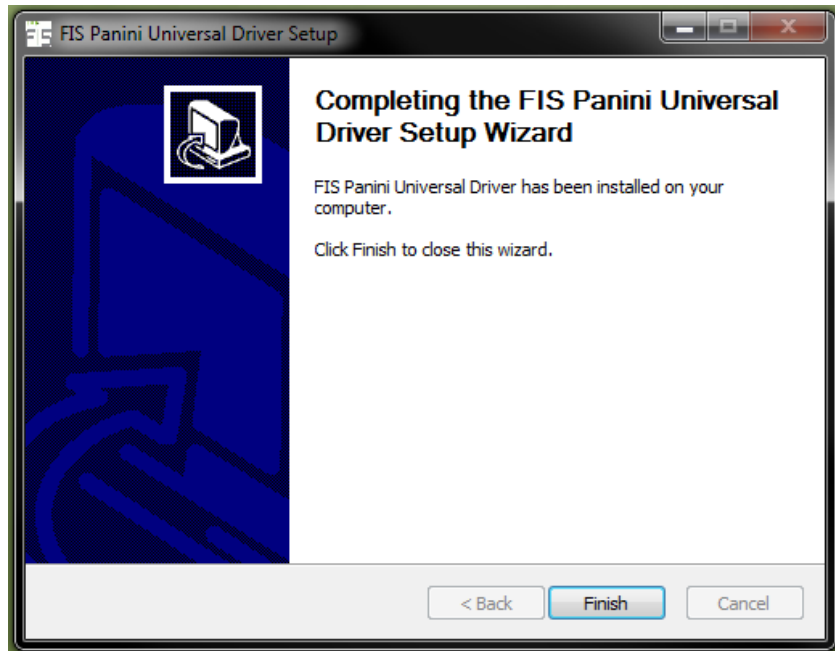
Step 14:

The following screen will appear. Click **Next**.



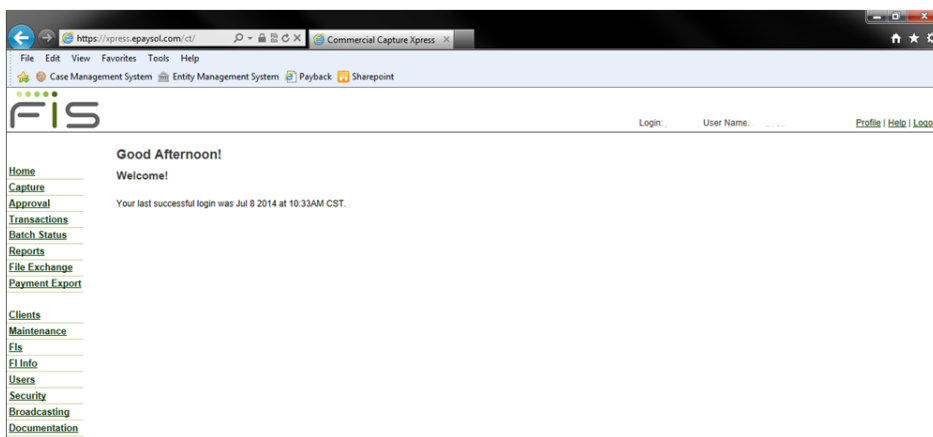
Step 15:

The following screen will display. Click **Finish**.



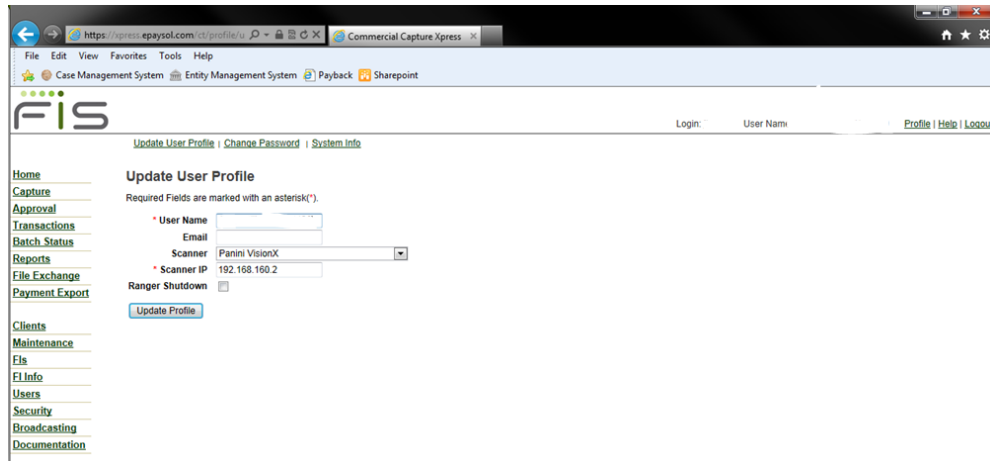
Step 16:

Connect the scanner to the computer using the USB cable. Log onto the CCX site using the site address provided by FIS personnel. A login page similar to the one shown below will display. Log in to the site using your login credentials.



Step 17:

Once you are logged into the site, select the **Profile** tab on the upper right side of the page.

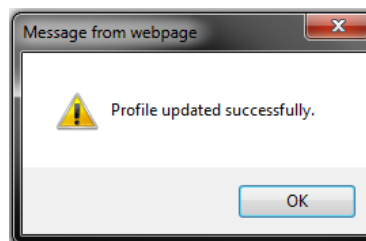
**Step 18:**

In the Scanner drop down field, choose the applicable Panini scanner:

- Panini VisionX
- Panini IDeal
- Panini wIDeal

Step 19:

Click on the **Update Profile** button. The system will prompt the user with the following screen.



Select **OK**. The scanner is ready to be used.